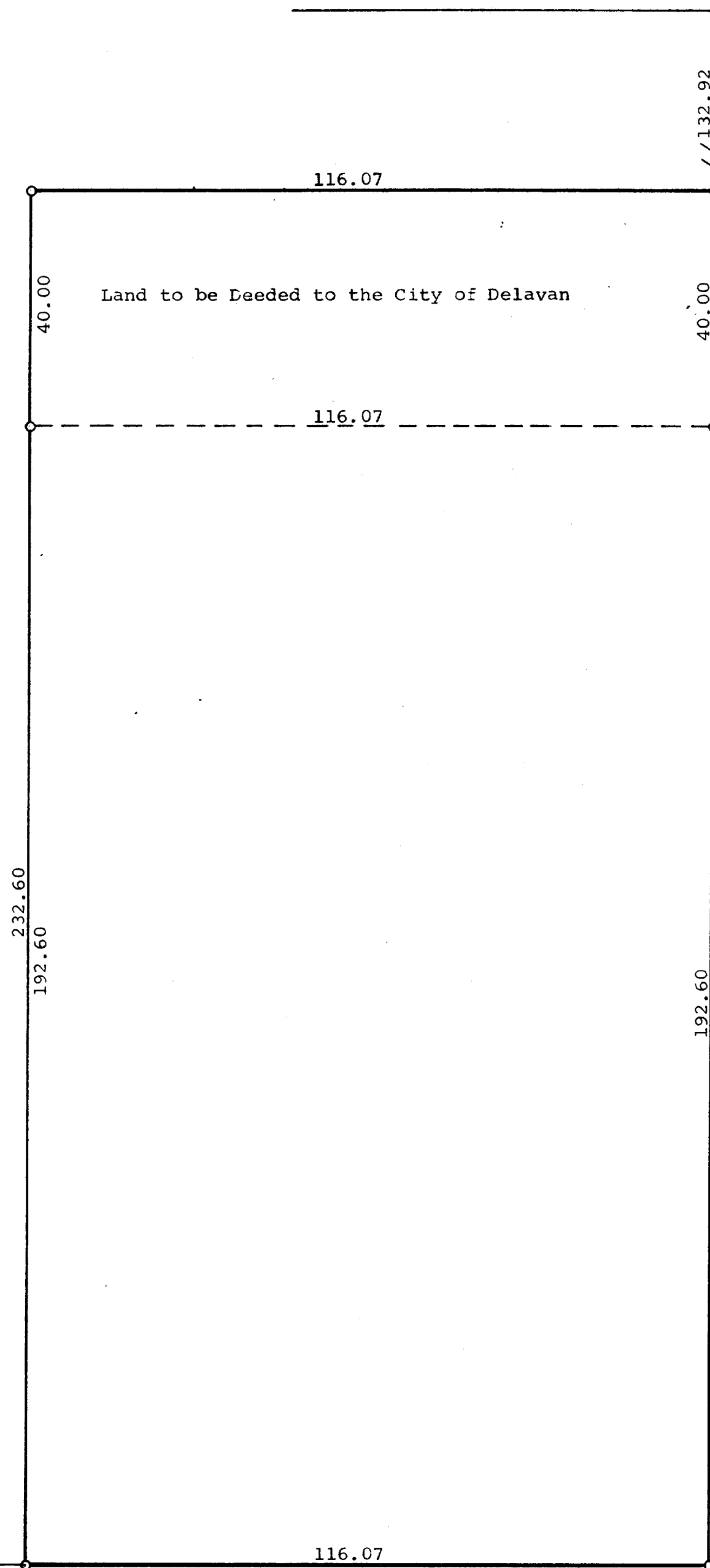


GEORGE T. DUNHAM
SURVEYING & SUBDIVIDING
DELAVAN, WISCONSIN

McDowell Street

N



Scale - 1" = 20'
○ = Iron Pipe
● = Concrete Monument

Plat of survey of land owned by the Citizens Bank of Delavan including land to be deeded by the City of Delavan to the Citizens Bank of Delavan and located in the Northeast $\frac{1}{4}$ of Section 18, T 2 N, R 16 E, City of Delavan, Walworth County, Wisconsin. December 14, 1970

George T. Dunham
George T. Dunham, Surveyor